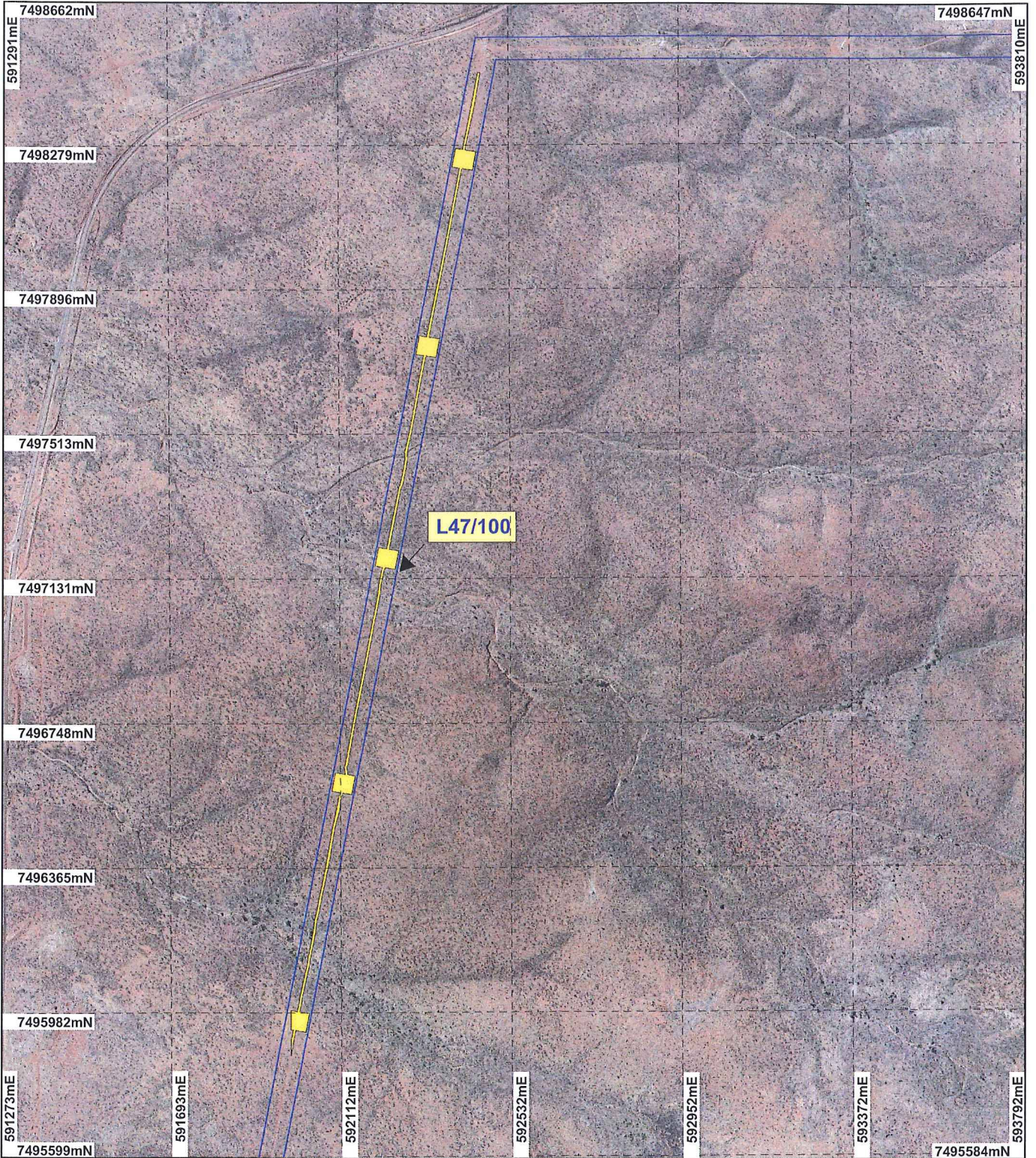


PLAN 5918/1 A



LEGEND

- Mining Tenements
 - Clearing Instruments
 - Areas Approved to Clear
- Mount Lionel 50cm
Orthomosaic - Landgate
2004



0 375 m

Scale 1:14000

(Approximate when reproduced at A4)

Geocentric Datum Australia 1994

Note: the data in this map have not been projected. This may result in geometric distortion or measurement inaccuracies.

Date 23/1/14

STEVE TANTALA

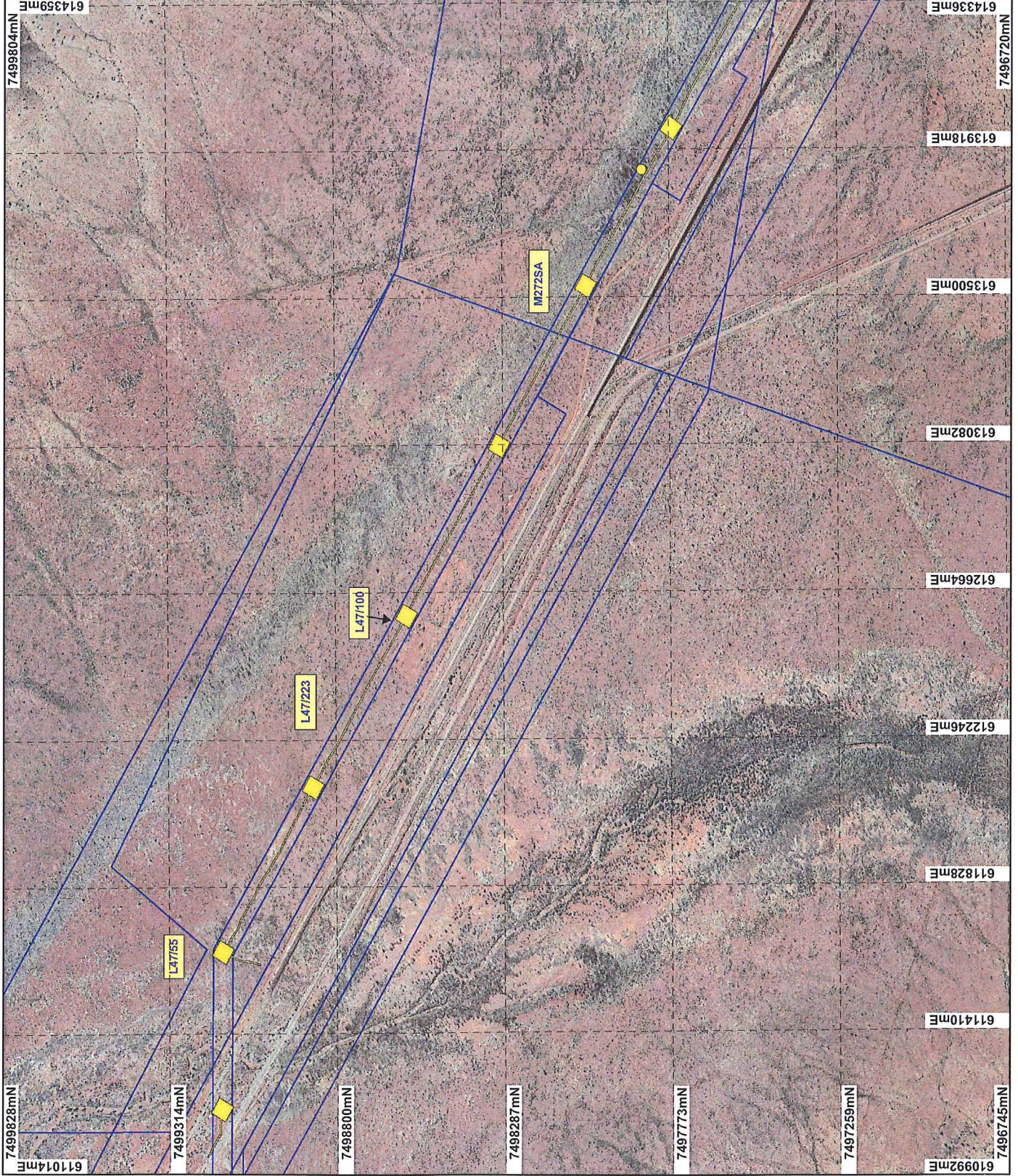
Officer with delegated authority under Section 20 of the Environmental Protection Act 1986

Information derived from this map should be confirmed with the data custodian acknowledged by the agency acronym in the legend.



WA Crown Copyright 2002

PLAN 5918/1 B



LEGEND

- Mining Tenements
- Clearing Instruments
- Areas Approved to Clear
- Mount Brass 50cm Orthomosaic -
Lansgate 2004



0 375 m

Scale 1:15500
(Approximate when reproduced at A4)

Geocentric Datum Australia 1994

Note: the data in this map have not been projected. This may result in geometric distortion or measurement inaccuracies.

STEVE TANTALA Date 23/11/14

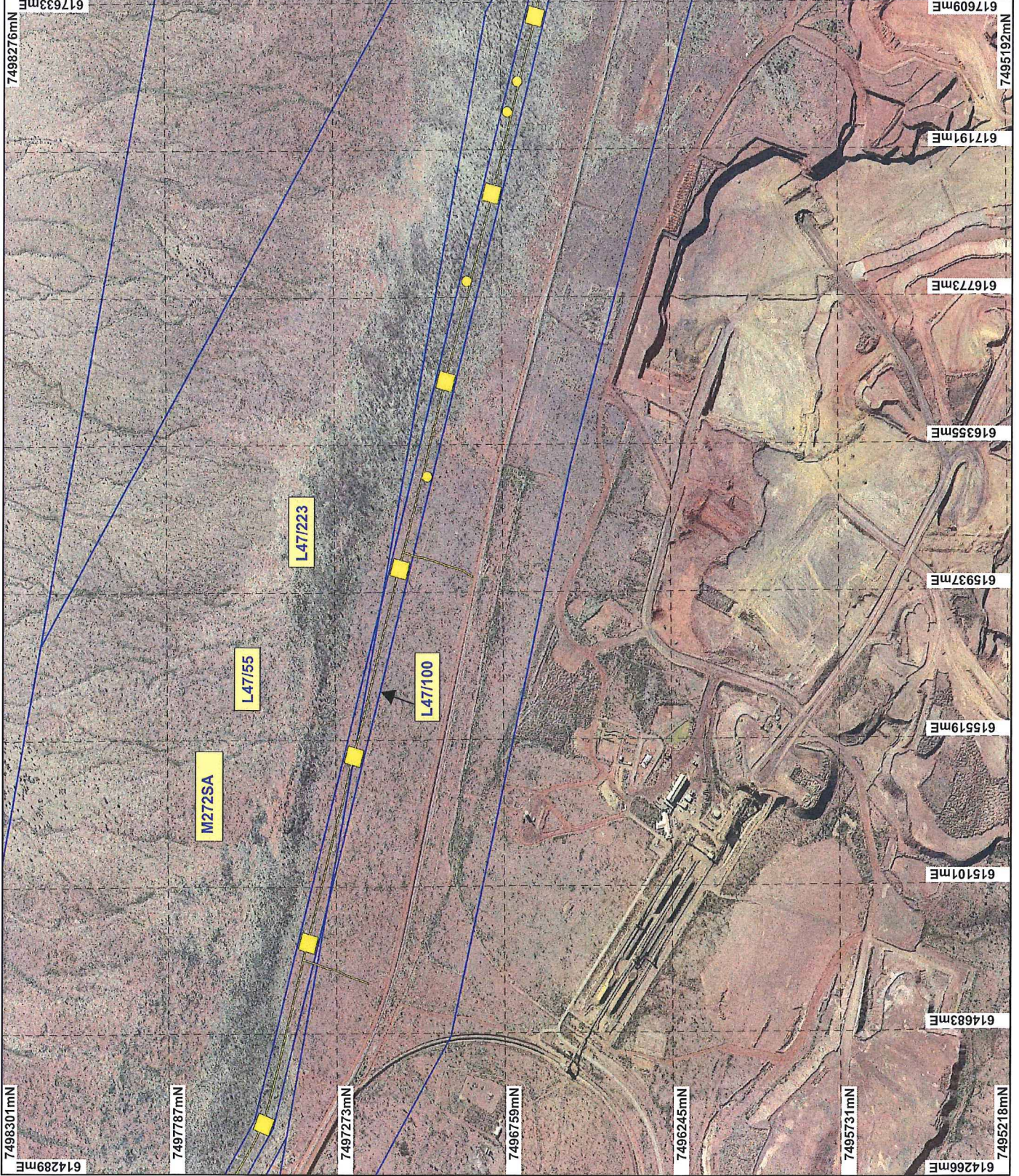
Information derived from this map should be confirmed with the data custodian acknowledged by the agency acronym in the legend.

Information derived from this map should be confirmed with the data custodian acknowledged by the agency acronym in the legend.



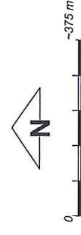
WA Crown Copyright 2002

PLAN 5918/1 C



LEGEND

- Mining Tenements
- Clearing Instruments
- Areas Approved to Clear
- Mount Bayes 50cm Orthomosaic - Langiate 2004



Scale 1:15500
(Approximate when reproduced at A4)

Geocentric Datum Australia 1994

Note: the data in this map have not been projected. This may result in geometric distortion or measurement inaccuracies.

Steve TANTALA Date 23/1/14

STEVE TANTALA

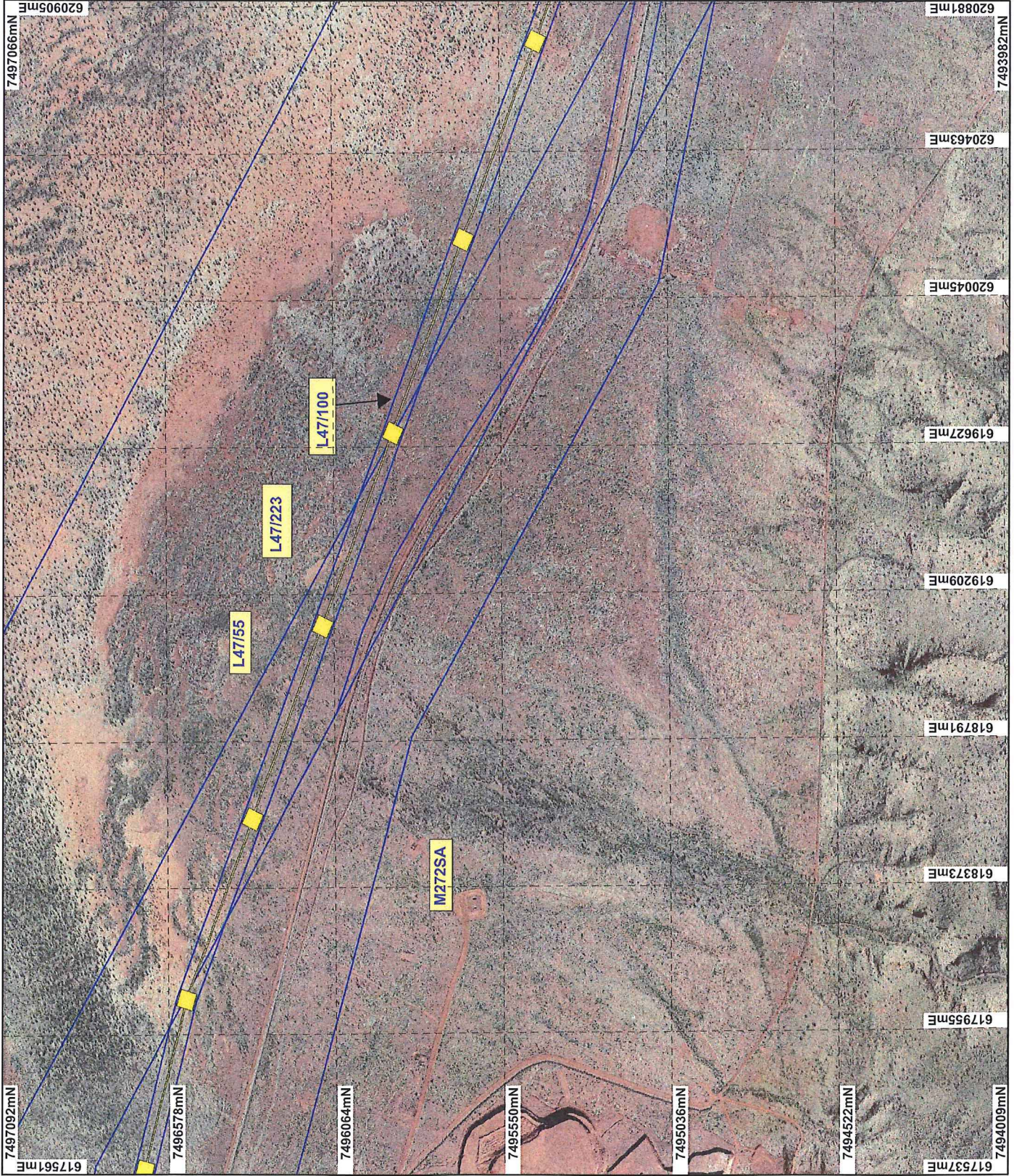
Officer with delegated authority under Section 20 of the Environmental Protection Act 1986

Information derived from this map should be confirmed with the data custodian acknowledged by the agency acronym in the legend.



WA Crown Copyright 2002

PLAN 5918/1 D



LEGEND

- ▭ Mining Tenements
- ▭ Clearing Instruments
- ▭ Areas Approved to Clear
- ▭ Mount Bays 50cm Orthomosaic - Landgate 2004



0 375 m

Scale 1:15500
(Approximate when reproduced at A4)

Geocentric Datum Australia 1994

Note: the data in this map have not been projected. This may result in geometric distortion or measurement inaccuracies.

Date: 23/1/11

STEVE TANTALA

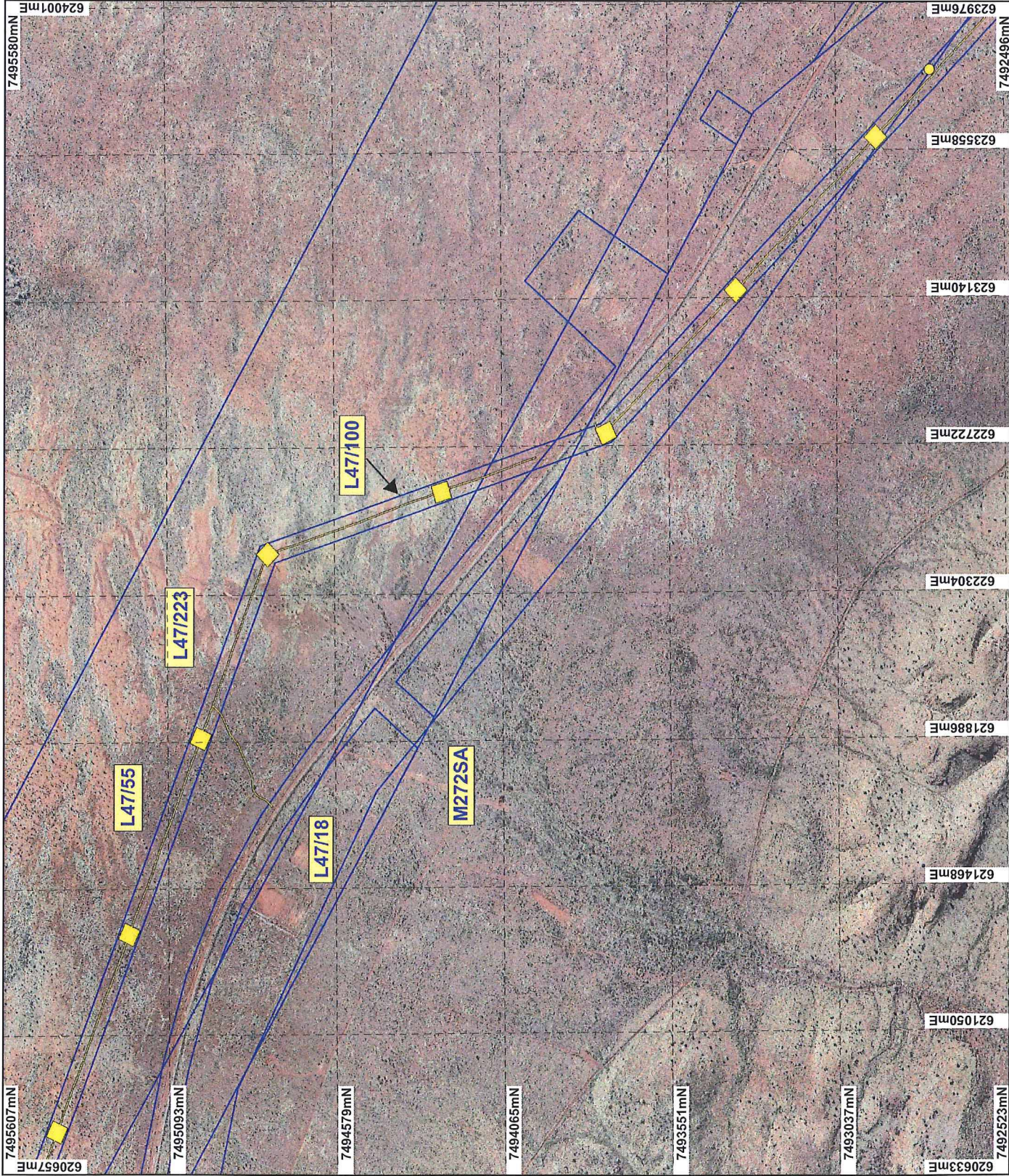
Officer with delegated authority under Section 20 of the Environmental Protection Act 1986

Information derived from this map should be confirmed with the data custodian and acknowledged by the agency acronym in the legend.



WA Crown Copyright 2002

PLAN 5918/1 E



LEGEND

- Mining Tenements
- Clearing Instruments
- Areas Approved to Clear
- Mount Bryes 50cm Orthomosaic -
Lanigate 2004



0 375 m

Scale 1:15500
(Approximate when reproduced at A4)

Geocentric Datum Australia 1994

Note: the data in this map have not been projected. This may result in geometric distortion or measurement inaccuracies.

STEVE TANTALA Date 23/11/14

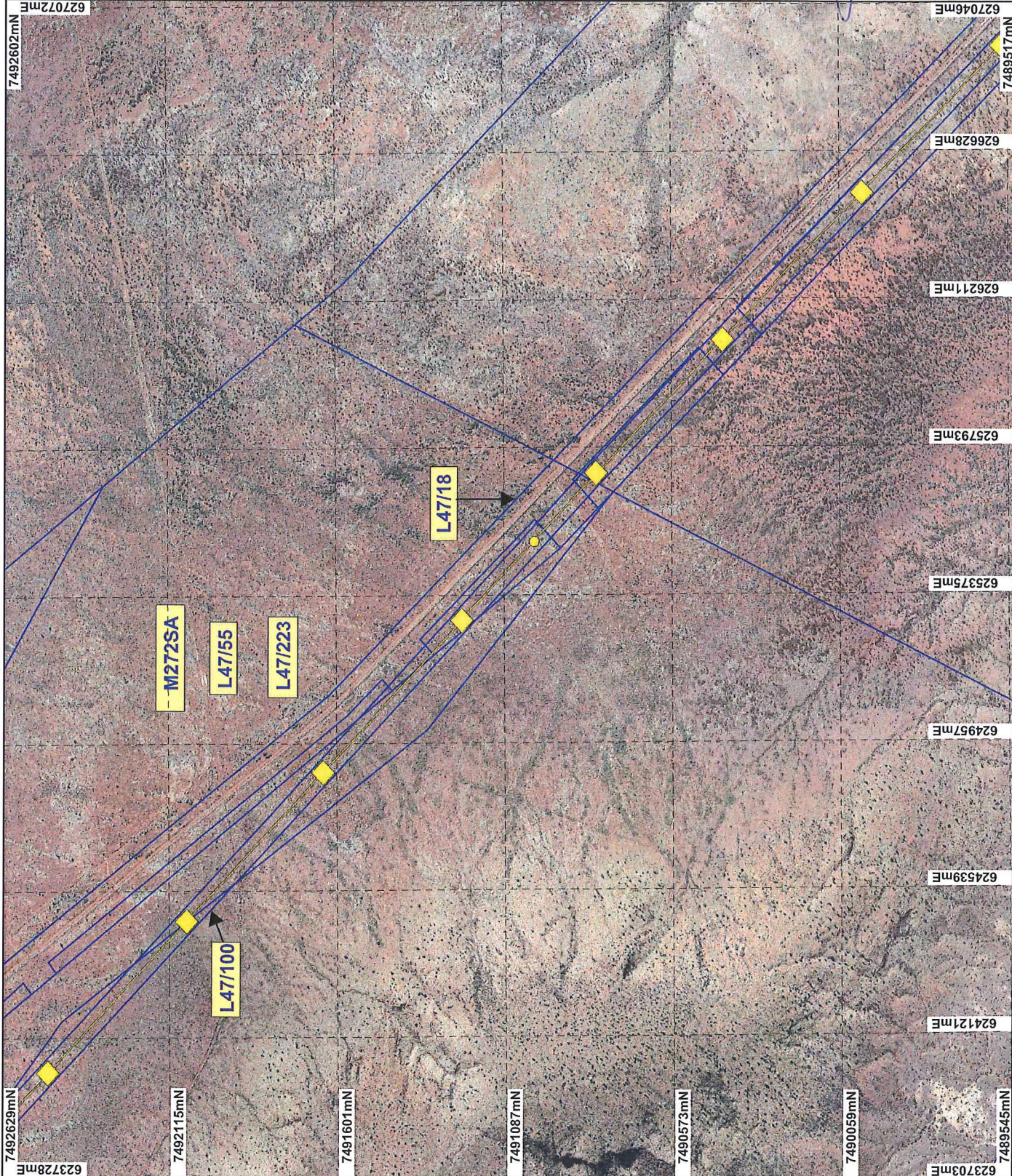
Information derived from this map should be confirmed with the data custodian acknowledged by the agency acronym in the legend.

Information derived from this map should be confirmed with the data custodian acknowledged by the agency acronym in the legend.



WA Govn Copyright 2002

PLAN 5918/1 F



LEGEND

- ▭ Mining Tenements
- ▭ Clearing Instruments
- ▭ Areas Approved to Clear
- ▭ Mount Bruce 50cm Orthomosaic -
Lanigate 2004



Scale 1:15500
(Approximate when reproduced at A4)

Geocentric Datum Australia 1994

Note: the data in this map have not been projected. This may result in geometric distortion or measurement inaccuracies.

STEVE TANTALA
Date 23/1/14

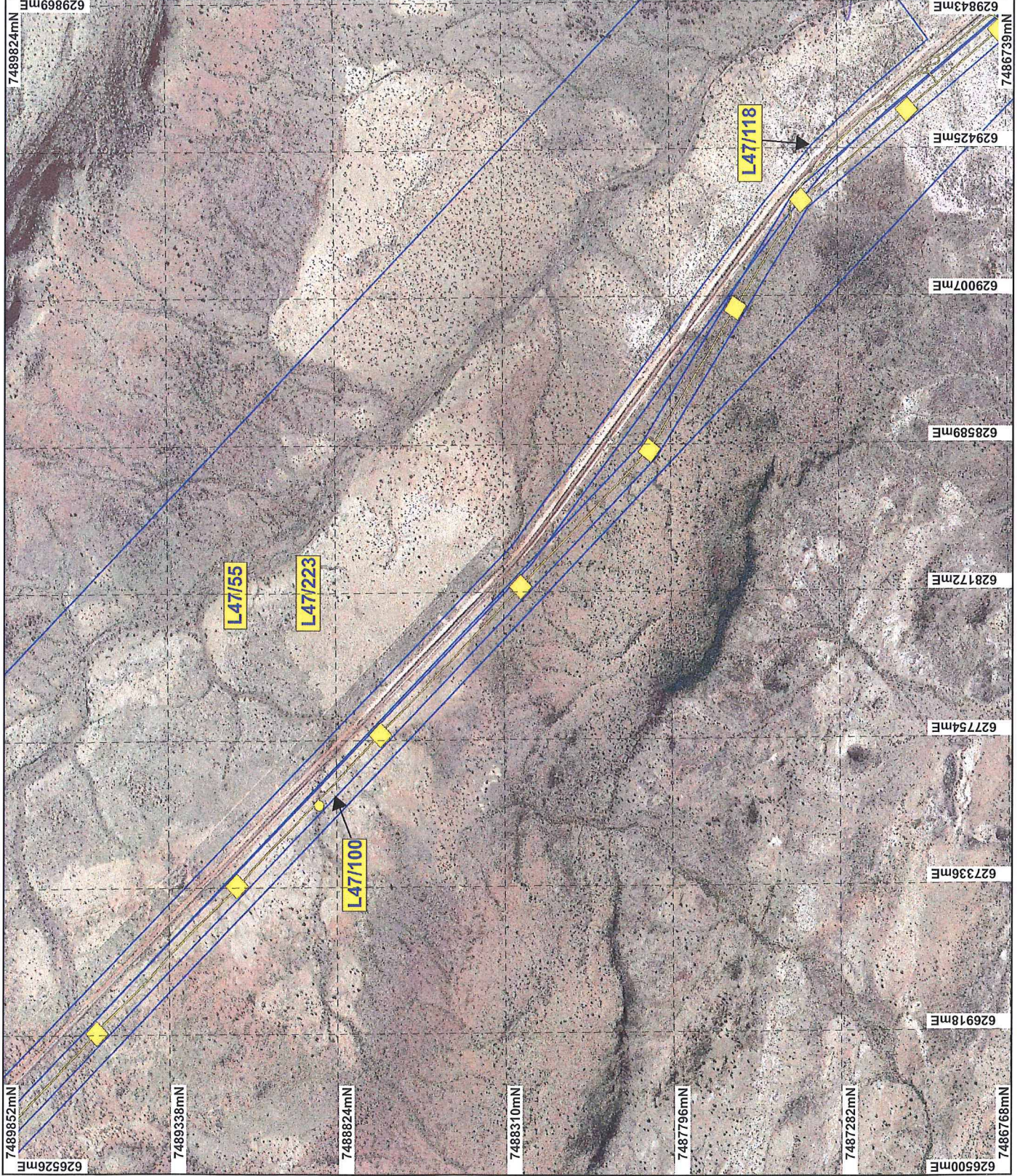
Officer with delegated authority under Section 20 of the Environmental Protection Act 1986

Information derived from this map should be confirmed with the data custodian acknowledged by the agency acronym in the legend.



WA Crown Copyright 2002

PLAN 5918/1 G



LEGEND

- Mining Tenements
- Clearing Instruments
- ◆ Areas Approved to Clear
- ◆ Mount Bruce 50cm Orthomosaic - Lanigate 2004



0 375 m

Scale 1:15500
(Approximate when reproduced at A4)

Geocentric Datum Australia 1994

Note: the data in this map have not been projected. This may result in geometric distortion or measurement inaccuracies.

Date 23/11/14

STEVE TANTALA

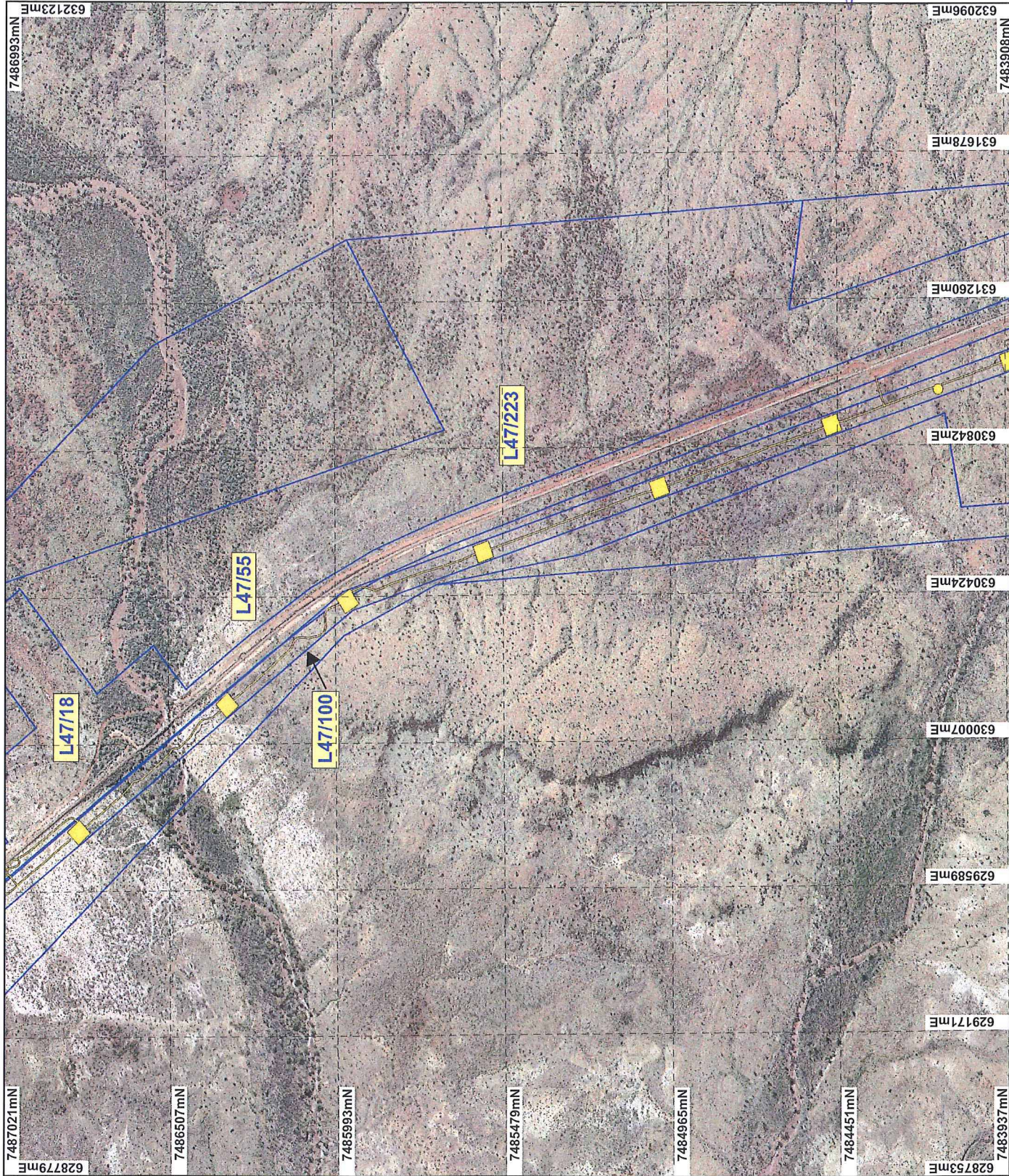
Officer with delegated authority under Section 20 of the Environmental Protection Act 1986

Information derived from this map should be confirmed with the data custodian acknowledged by the agency acronym in the legend.



WA Crown Copyright 2002

PLAN 5918/1 H



LEGEND

- Mining Tenements
 - Clearing Instruments
 - Areas Approved to Clear
- Mount Bruce 50cm Orthomosaic -
Langgate 2004



Scale 1:15500
(Approximate when reproduced at A4)

Geocentric Datum Australia 1994

Note: the data in this map have not been projected. This may result in geometric distortion or measurement inaccuracies.

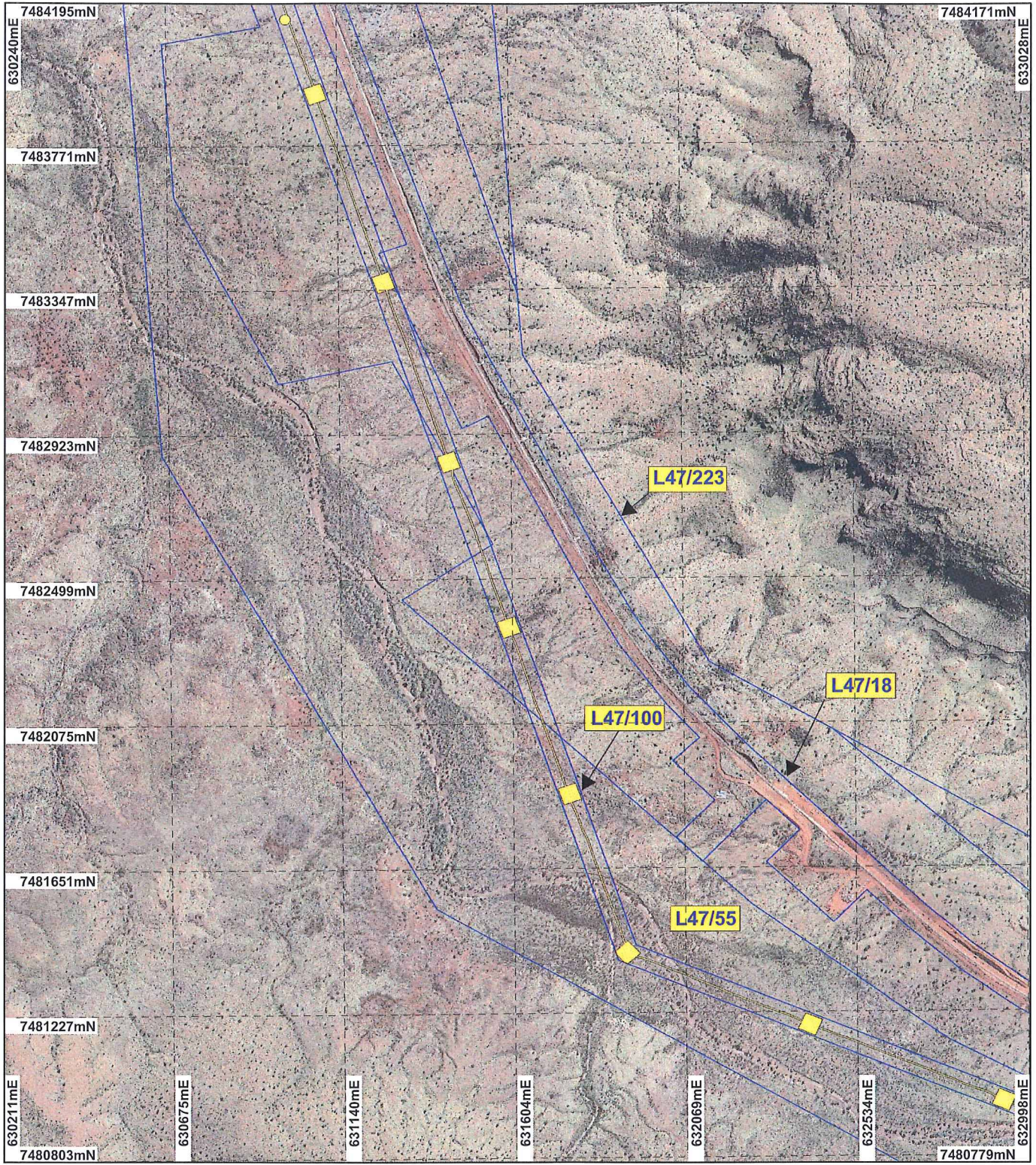
STEVE TANTALA Date 23/11/11

Information derived from this map should be confirmed with the data custodian acknowledged by the agency acronym in the legend.



WA Crown Copyright 2002

PLAN 5918/1 I



LEGEND

- Mining Tenements
- Clearing Instruments
- Areas Approved to Clear
- Mount Bruce 50cm
Orthomosaic - Landgate
2004



0 ————— 375 m

Scale 1:15500

(Approximate when reproduced at A4)

Geocentric Datum Australia 1994

Note: the data in this map have not been projected. This may result in geometric distortion or measurement inaccuracies.

Date 23/1/14

STEVE TANTALA

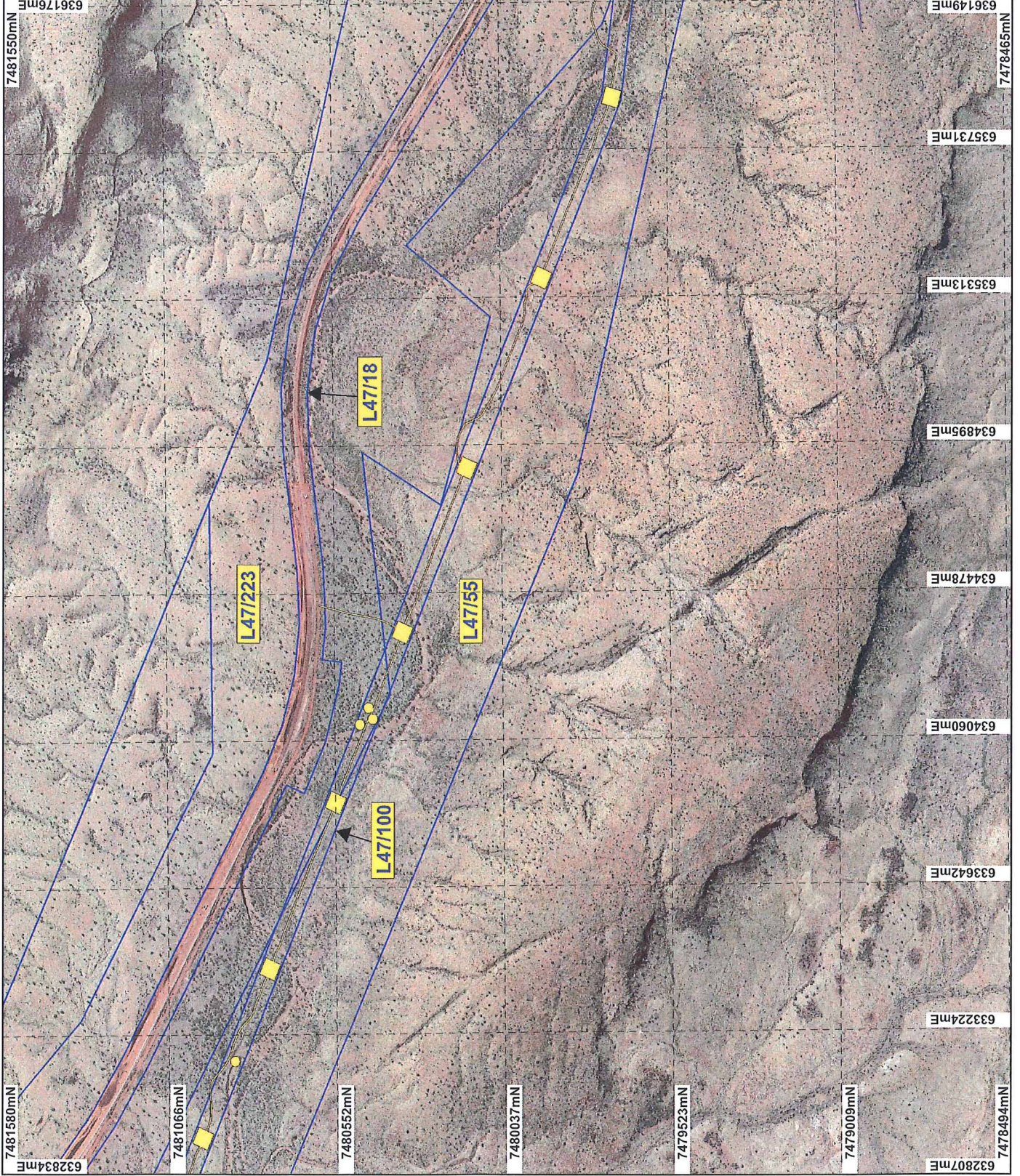
Officer with delegated authority under Section 20 of
the Environmental Protection Act 1986

Information derived from this map should be
confirmed with the data custodian acknowledged
by the agency acronym in the legend.



WA Crown Copyright 2002

PLAN 5918/1 J



LEGEND

- Mining Tenements
- Clearing Instruments
- Areas Approved to Clear
- Mount Brues 50cm Orthomosaic - Landgate 2004



0 375 m

Scale 1:15500
(Approximate when reproduced at A4)

Geocentric Datum Australia 1994

Note: the data in this map have not been projected. This may result in geometric distortion or measurement inaccuracies.

Date 23/11/14

STEVE TANTALA

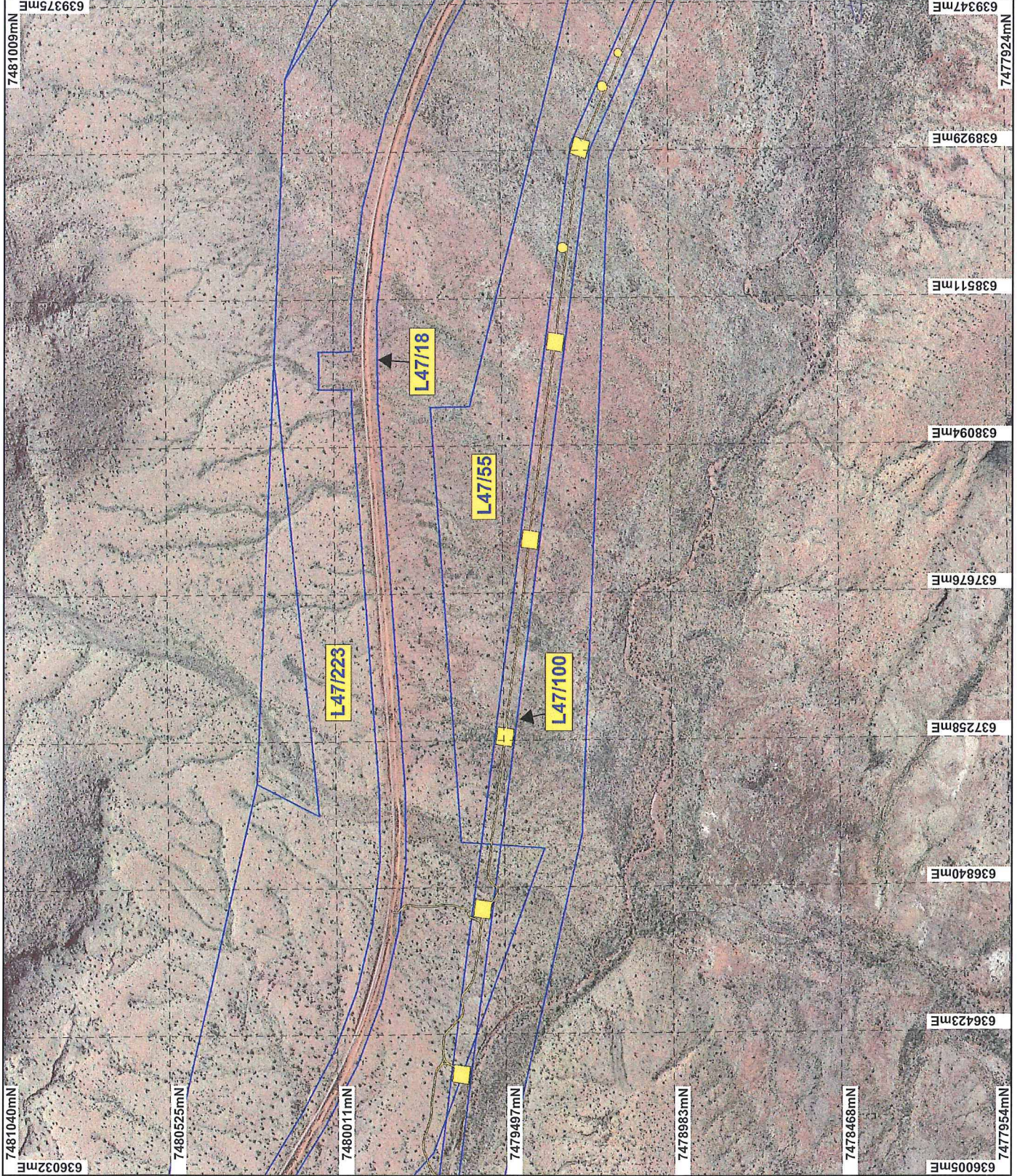
Officer with delegated authority under Section 20 of the Environmental Protection Act 1986

Information derived from this map should be confirmed with the data custodian acknowledged by the agency acronym in the legend.



WA Crown Copyright 2002

PLAN 5918/1 K



LEGEND

- Mining Tenements
- Clearing Instruments
- Areas Approved to Clear
- Mount Bruce 50cm Orthomosaic - Langgate 2004



0 375 m

Scale 1:15500
(Approximate when reproduced at A4)

Geocentric Datum Australia 1994

Note: the data in this map have not been projected. This may result in geometric distortion or measurement inaccuracies.

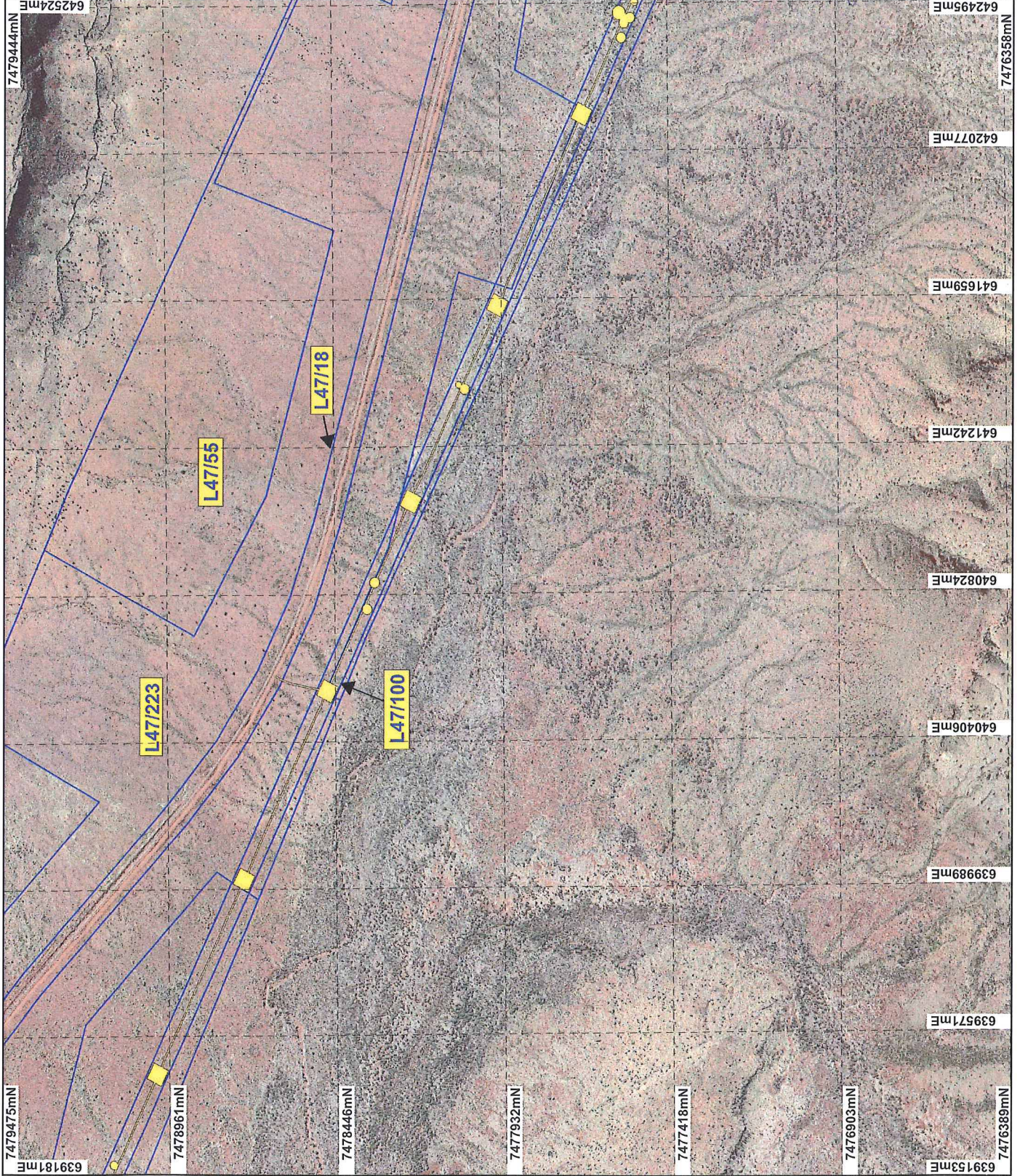
Steve Tantala Date 23/1/14

Information derived from this map should be confirmed with the data custodian acknowledged by the agency acronym in the legend.



WA Crown Copyright 2002

PLAN 5918/1 L



LEGEND

- Mining Tenements
- Clearing Instruments
- Areas Approved to Clear
- Mount Bruce 50cm Orthomosaic - Langgate 2004



0 375 m

Scale 1:15500
(Approximate when reproduced at A4)

Geocentric Datum Australia 1994

Note: the data in this map have not been projected. This may result in geometric distortion or measurement inaccuracies.

Signature: *[Handwritten Signature]*
Date: 21/11/14

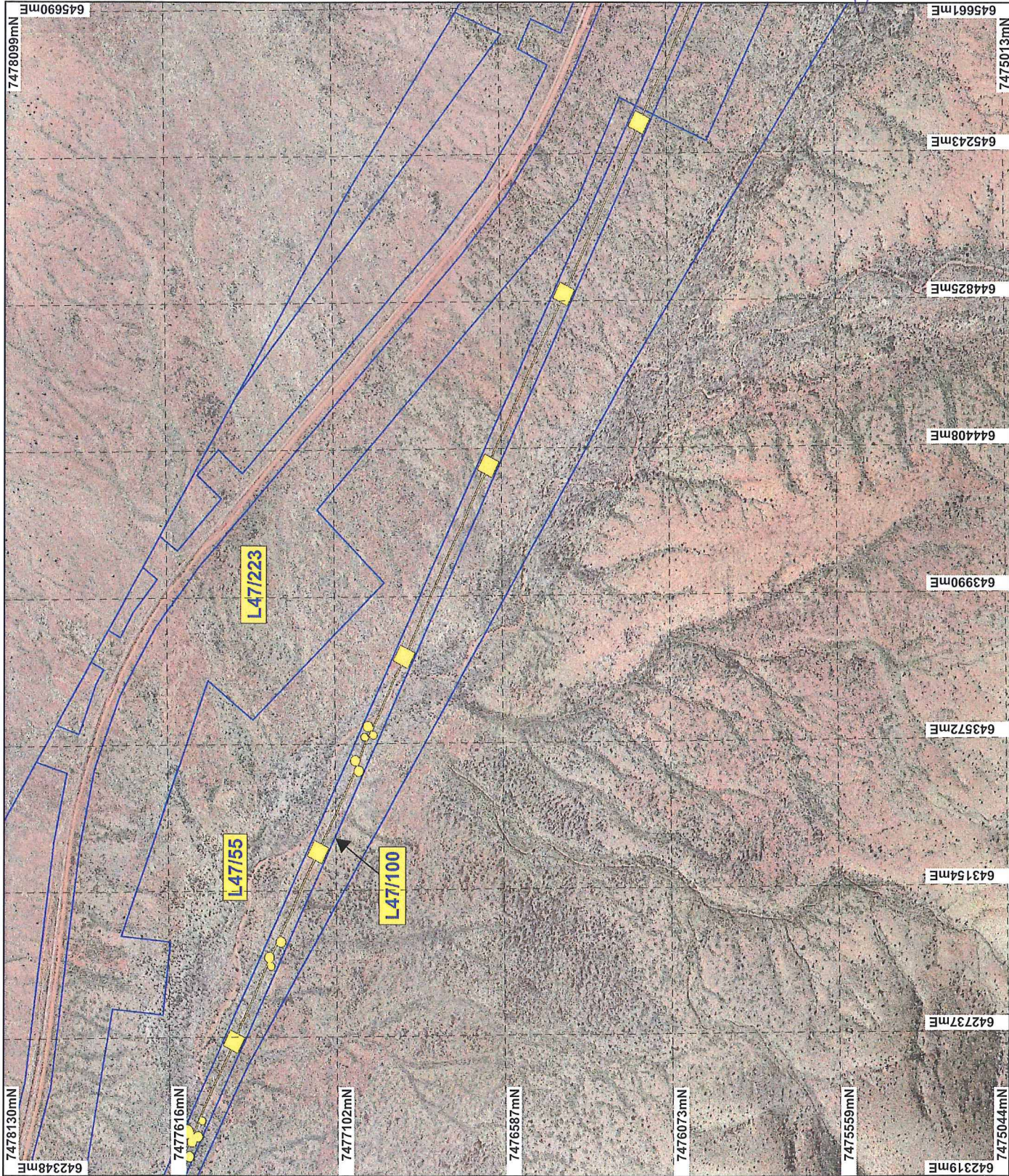
STEVE TANTALA
Officer with delegated authority under Section 20 of the Environmental Protection Act 1986

Information derived from this map should be confirmed with the data custodian acknowledged by the agency acronym in the legend.



WA Crown Copyright 2002

PLAN 5918/1 M



LEGEND

- Mining Tenements
- Clearing Instruments
- Areas Approved to Clear
- Mount Bruce 50cm Orthomosaic - Lanigate 2004



0 375 m

Scale 1:15500
(Approximate when reproduced at A4)

Geocentric Datum, Australia 1994

Note: the data in this map have not been projected. This may result in geometric distortion or measurement inaccuracies.

STEVE TANPAC

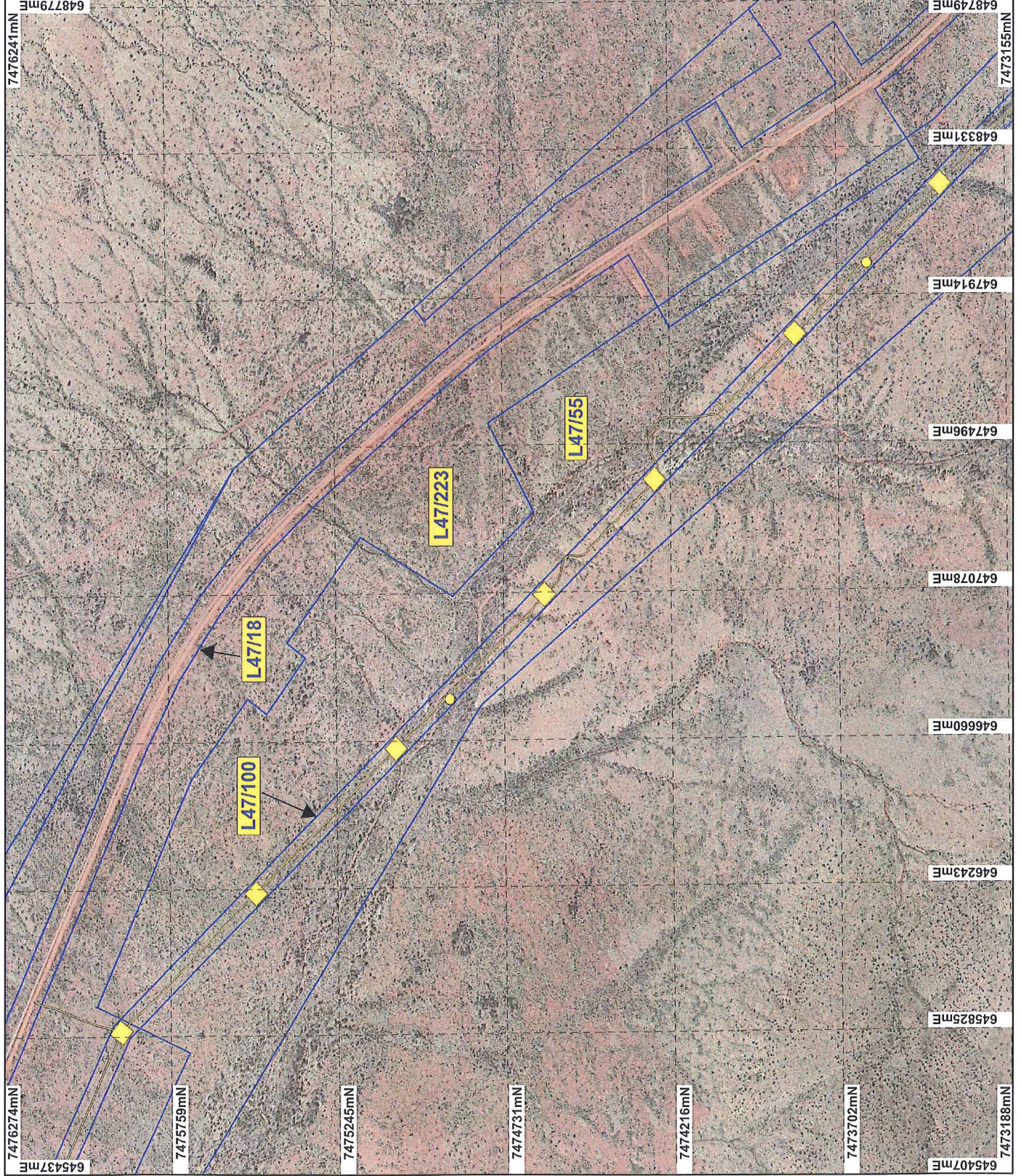
Date 22/11/17
Officer with delegated authority under Section 20 of the Environmental Protection Act 1986

Information derived from this map should be confirmed with the data custodian acknowledged by the agency acronym in the legend.



WA Crown Copyright 2002

PLAN 5918/1 N



LEGEND

- Mining Tenements
- Clearing Instruments
- Areas Approved to Clear
- Mount Bruce 50cm Orthomosaic - Landgate 2004



0 375 m

Scale 1:15500
(Approximate when reproduced at A4)

Geocentric Datum Australia 1994

Note: the data in this map have not been projected. This may result in geometric distortion or measurement inaccuracies.

Steve TANTALA Date 23/11/14

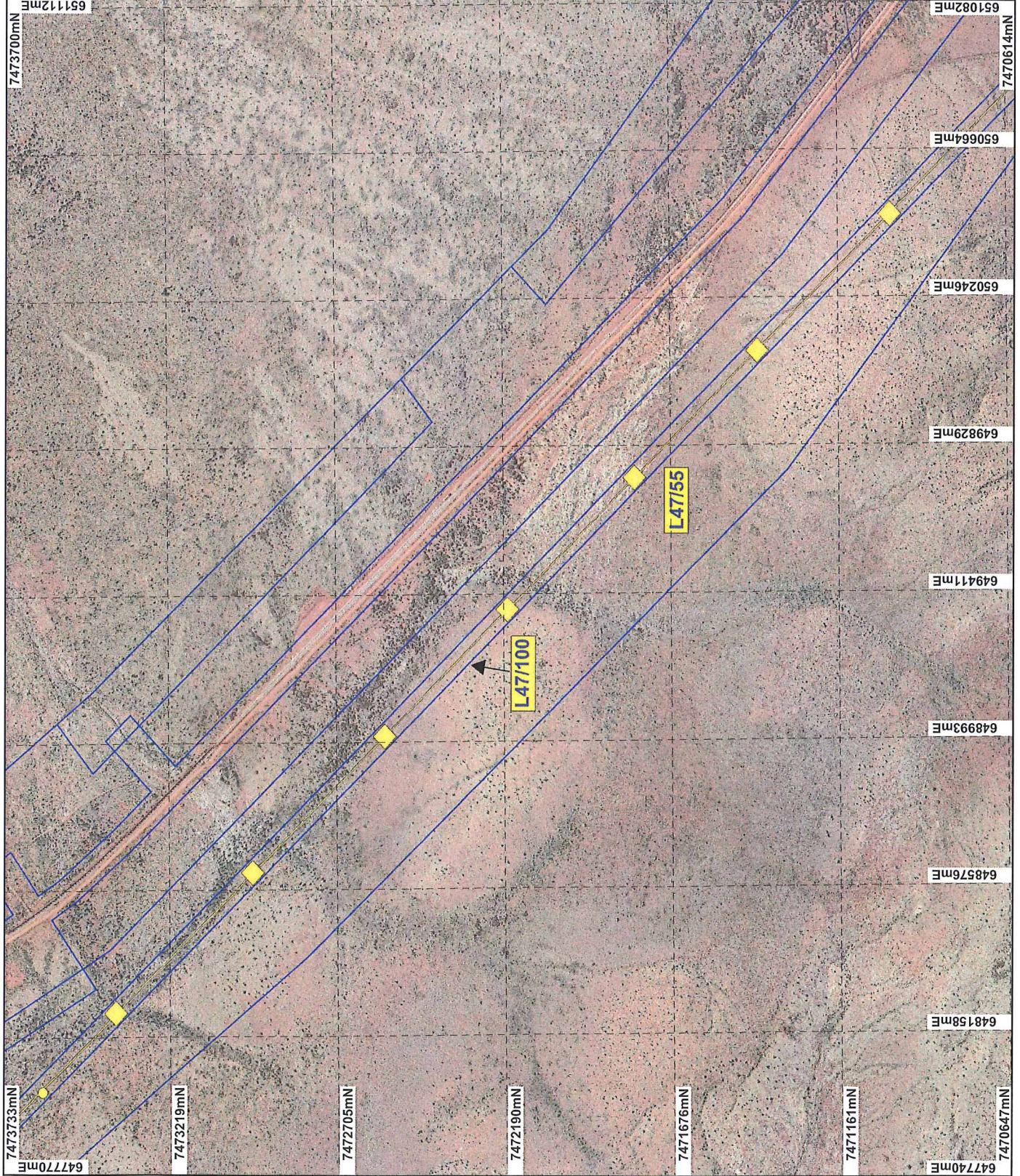
STEVE TANTALA

Officer with delegated authority under Section 20 of the Environmental Protection Act 1986

Information derived from this map should be confirmed with the data custodian acknowledged by the agency acronym in the legend.



PLAN 5918/1 O



LEGEND

- Mining Tenements
- Clearing Instruments
- Areas Approved to Clear
- Mount Bruce 50cm Orthomosaic - Landgate 2004



Scale 1:15500
(Approximate when reproduced at A4)

Geocentric Datum Australia 1994

Note: the data in this map have not been projected. This may result in geometric distortion or measurement inaccuracies.

Date 22/1/14

STEVE TANTALA

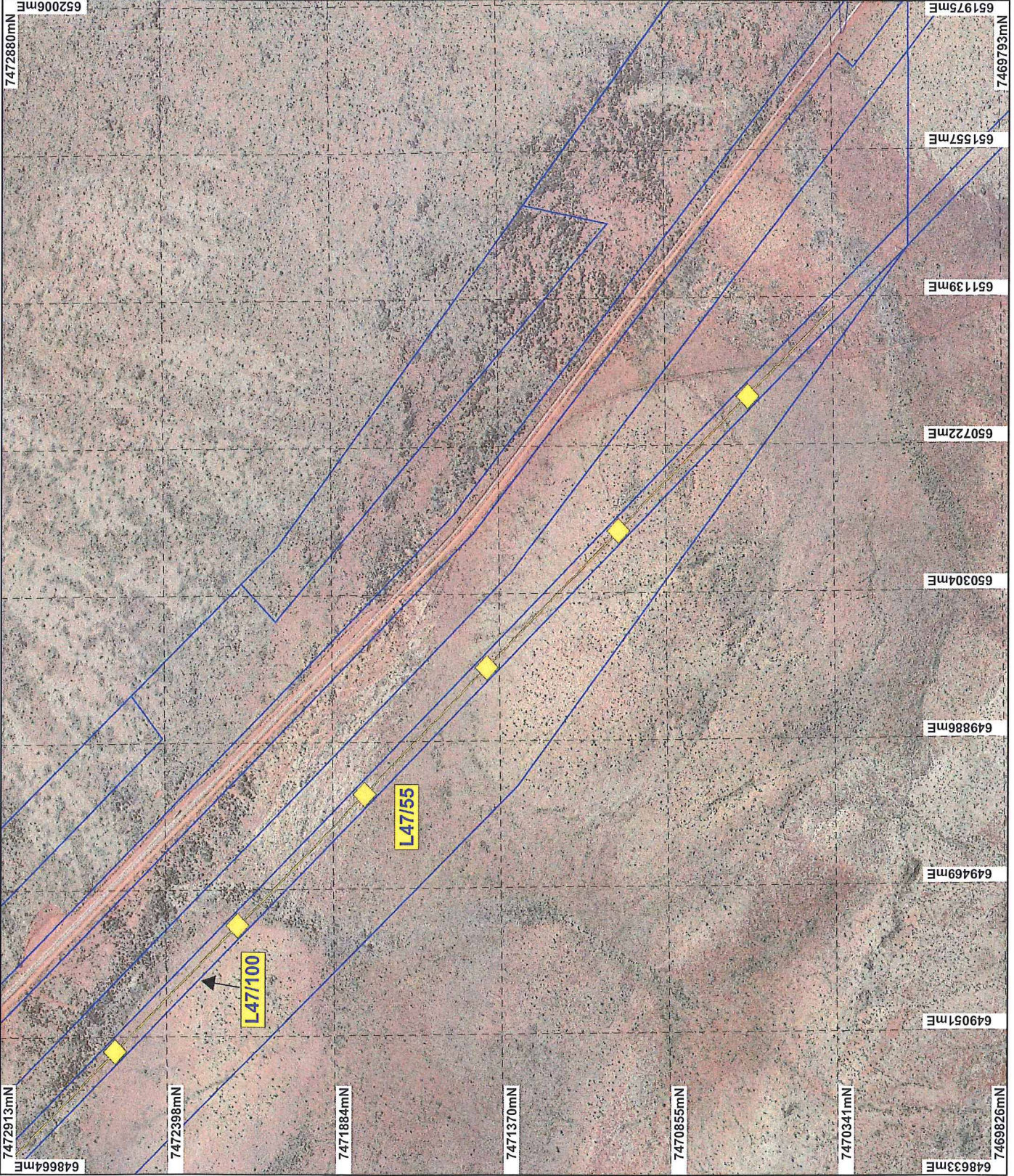
Officer with delegated authority under Section 20 of the Environmental Protection Act 1986

Information derived from this map should be confirmed with the data custodian acknowledged by the agency acronym in the legend.



WA Crown Copyright 2002

PLAN 5918/1 P



LEGEND

- Mining Tenements
- Clearing Instruments
- Areas Approved to Clear
- Mount Bruce 50cm Orthomosaic -
Lanigate 2004



0 375 m

Scale 1:15500

(Approximate when reproduced at A4)

Geocentric Datum Australia 1994

Note: the data in this map have not been projected. This may result in geometric distortion or measurement inaccuracies.

Date 23/11/14

STEVE TANTALA

Officer with delegated authority under Section 20 of the Environmental Protection Act 1986

Information derived from this map should be confirmed with the data custodian acknowledged by the agency acronym in the legend.



WA Crown Copyright 2002